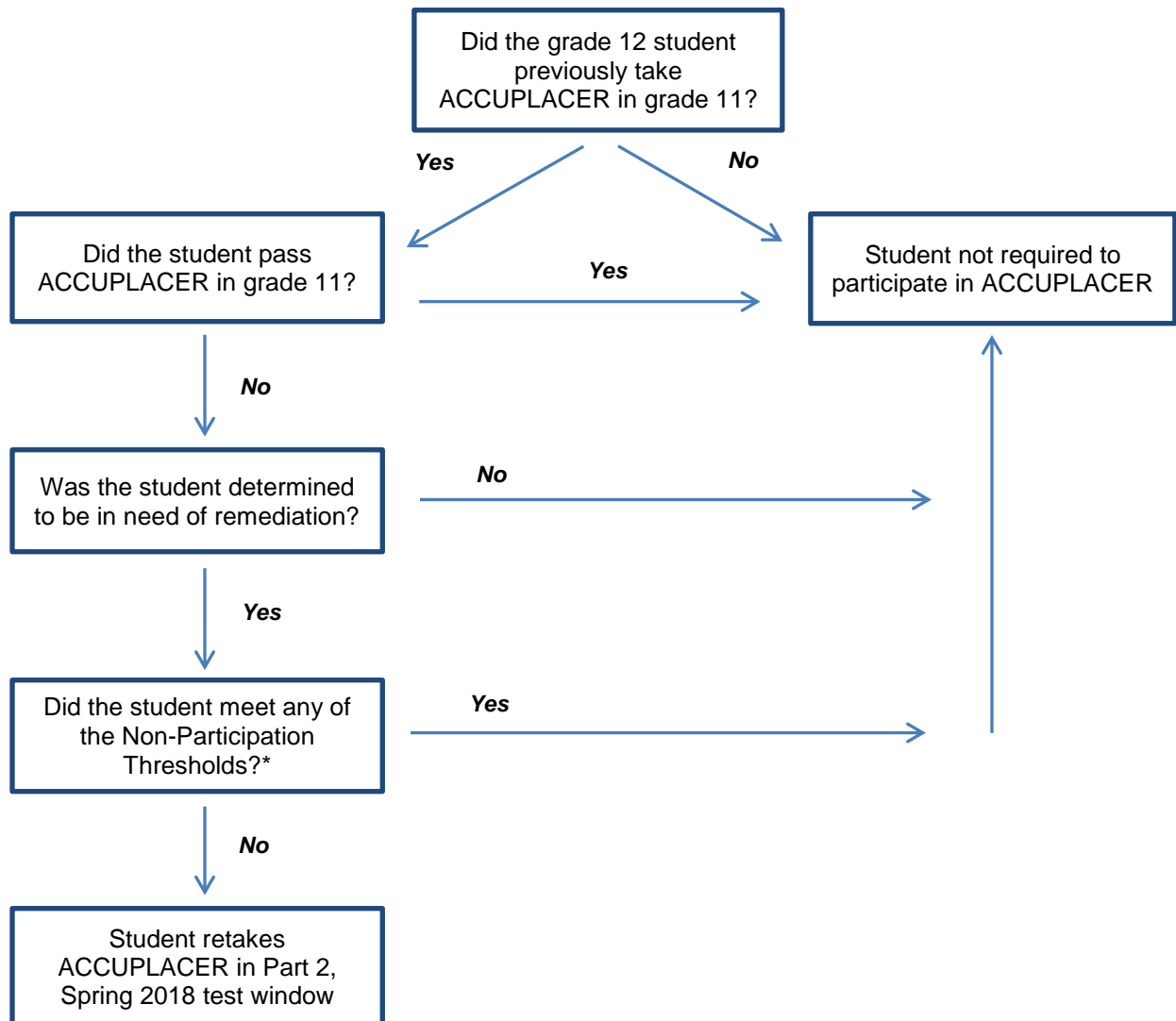


**ACCUPLACER Participation Criteria and Implementation Guidance**  
**Grade 12 Students**  
**(Second-year Participants)**  
**Part 2 Administration: 2017-18**

*For Seniors who participated in ACCUPLACER as a Grade 11 student*



<b>*ACCUPLACER Non-Participation Thresholds</b>	
<u>ELA</u> <ul style="list-style-type: none"> <li>SAT Reading Test Score <math>\geq 25</math></li> <li>ACT Reading Score <math>\geq 18</math></li> <li>ACT English Score <math>\geq 17</math></li> <li>ACCUPLACER Classic Version: Reading <math>\geq 76</math></li> <li>ACCUPLACER Custom Version: Reading Diagnostic <math>\geq 69</math></li> </ul>	<u>Math</u> <ul style="list-style-type: none"> <li>SAT Math Section Score <math>\geq 500</math></li> <li>ACT Math Score <math>\geq 18</math></li> <li>ACCUPLACER Classic/Custom Version: Elementary Algebra <math>\geq 92</math></li> </ul>