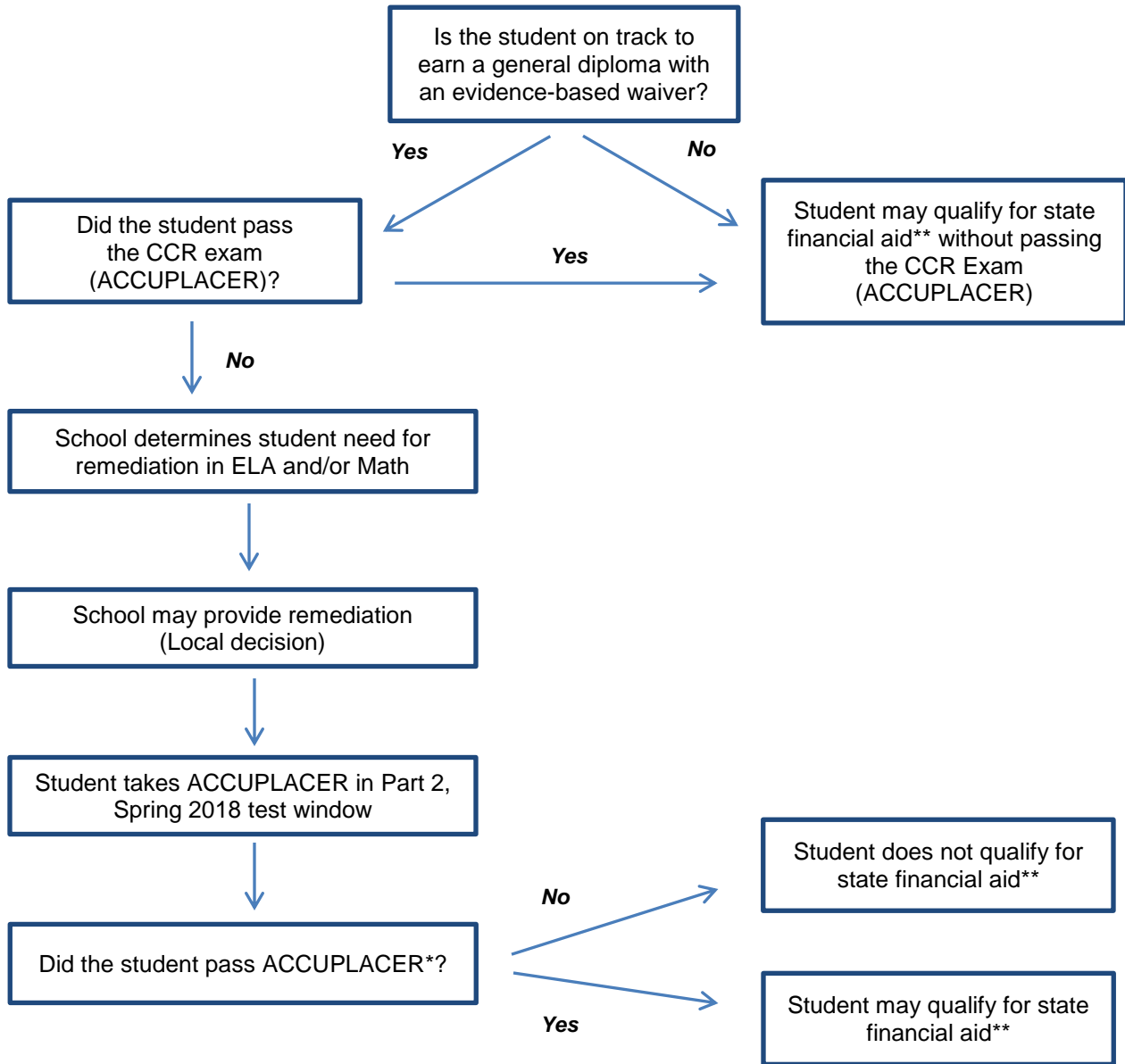


**ACCUPLACER Participation Criteria and Implementation Guidance
Grade 12 Students
State Financial Aid-Related Information
Part 2 Administration: 2017-18**

*For Seniors who want to qualify for post-secondary state financial aid **with regard to stand-alone remedial ELA and Math courses***



***ACCUPLACER Passing Score Requirements:**

ELA

ACCUPLACER Classic Version: Reading ≥ 76

ACCUPLACER Custom Version: Reading Diagnostic ≥ 69

Math

ACCUPLACER Classic/Custom Version: Elementary Algebra ≥ 92

****State financial aid with regard to post-secondary stand-alone remedial ELA and Math courses**