

IPI, Inc.

Parents Recovering Rebuilding

parenting successfully thru recovery

you are
so much
stronger
than you
think.



JOIN US

Now Enrolling



Tuesdays and Thursdays from 9:00am - 10:30am

839 Broadway | Room LLB96 | Gary

as we learn to parent and live successfully thru life's challenges without dependency

Update your Parenting Skills | Workforce Readiness Skills TODAY!

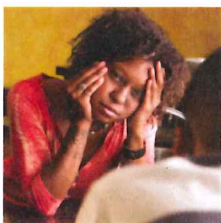
a Gary Drug Court partnership



Call (219) 886-1111 TODAY.



Feeling challenged? Let IPI help...



IPI's Parent Resource Center (PRC) connects you to those family resources and services in the community that assist with:

housing | utilities | transportation | healthcare | employment | childcare

Visit PRC's Community Bulletin Board: www.indianaparentinginstitute.org