



School City of
Hobart

Focus on Education



FALL 2010

Superintendent.....Dr. Peggy Buffington

The School City of Hobart's vision and mission should have personal meaning to all who live and work in the community of Hobart. What kind of schools do we imagine for our children? What do we want any one of our children or children's children to experience growing up and living in the community of Hobart? How can we make the quality of life increasingly better for the next generation? "Success for All Students" must be a priority for all members of our community. Children have to be our focus! From family to school to community, we must unite in an effort to help our children succeed.

The academic achievement of our students in Hobart is very promising as noted on page 2 of this newsletter. As concerned parents and community members, it is essential for us to know that as youth enter into middle and high school, their academics become less important and their social network becomes more significant. Teaching responsibility and making good choices are very difficult tasks. Parents, Guardians, and Community Members, please take the "**Parent Pledge**" on page 3 and help us be committed to the academic achievement and the career success of every child. In addition, we must assist our youth in feeling a sense of belonging and connectedness to the community. Our goal should be to help shape their attitudes and behaviors by being good role models and mentors as we assist them in becoming valued, contributing members to society as seen on page 4 in "**It's All About Citizenship.**" Page 5 of this newsletter contains a list of the most critical behaviors and risk factors that our youth face, and you can join us in our efforts for a "**Community Cause: Brickie Pride and Drug Free.**" To assist all Hobart parents and guardians to be connected with our kids, we suggest "**Get With It! Get Smart! Socializing Online and Smart Phones!**" on page 6. On page 7, learn about "**I'm Not Your Friend, I'm Your Parent.**" Pages 8 and 9 of this newsletter focus on "**College and Career Readiness.**" **Fun and Free Events** for family and senior citizens can be found on pages 10 and 11, & page 12 has calendar and contact information.

Enjoy this edition of ***Focus on Education!***



*School City of Hobart and You!
Partners in the
"Success For All Students!"*

VISION FOR STUDENT LEARNING:

The School City of Hobart Community will foster intellectual curiosity, natural abilities, critical thinking, and literacy in students while developing respectful and responsible citizens who are excited about the challenges of tomorrow, confident in their ability to chart the future, and dedicated to the pursuit of lifelong learning.

MISSION:

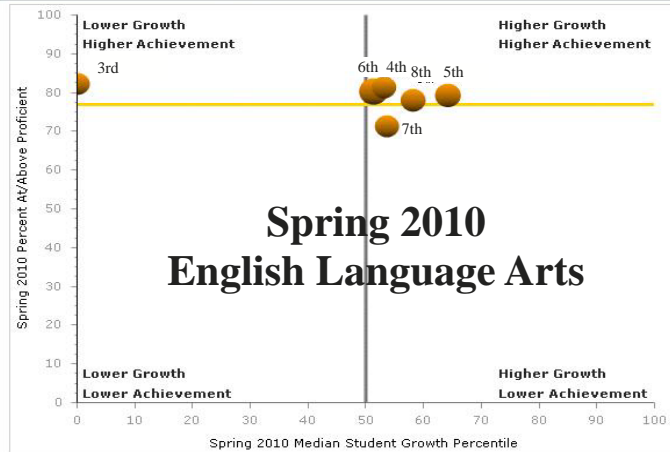
Our Schools Equip Children for Adulthood
Our Schools Address the Needs of Individual Students
Our Schools Are Community Schools
Our Schools Are Committed to Success

***Every child matters! As a community, let's be committed to making them our priority!
Join the School City of Hobart in their quest for helping all students be successful!***

ISTEP+ and The Growth Model for Grades 3 –8

GROWTH MODEL / SCHOOL CITY OF HOBART / GRADE /

SCHOOL CITY OF HOBART (4730): SCHOOL ACHIEVEMENT & GROWTH



Mouse over a point to view school data summary
Click a point to view drill down options
Check boxes in grid below to highlight the points on the chart

[Clear All Selections](#)

| Name | # Tested | Pass % | Median Growth % |
|------------------------------------|----------|--------|-----------------|
| <input type="checkbox"/> 3rd Grade | 277 | 82.3 | 0.0 |
| <input type="checkbox"/> 4th Grade | 283 | 81.3 | 53.0 |
| <input type="checkbox"/> 5th Grade | 300 | 79.3 | 64.0 |
| <input type="checkbox"/> 6th Grade | 336 | 80.4 | 51.0 |
| <input type="checkbox"/> 7th Grade | 282 | 71.3 | 53.5 |
| <input type="checkbox"/> 8th Grade | 291 | 78.0 | 58.0 |

School City of Hobart shows Higher Growth and Higher Achievement in the Spring 2010 ISTEP+ for English Language Arts in grades 4, 5, 6, and 8. Grade 7 shows Higher Growth and Lower Achievement.

Q: What is a growth model?

A: A growth model is a statistical way to determine how much change in ISTEP+ scores is equal to one year of student learning. It answers the question “how much did a student learn in a school year?”

Q: How does Indiana’s growth model work?

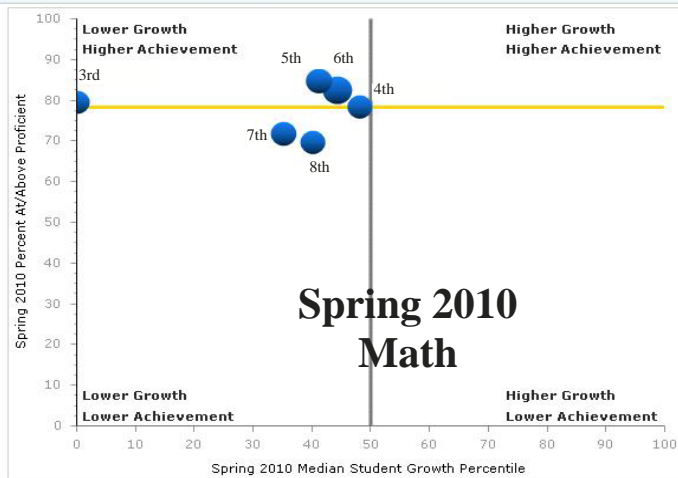
Growth and achievement are combined for each content area to determine which “quadrant” that a group or school falls into based on the students served for 126 days.



Growth adds a second dimension to student test scores. For decades we have assessed student and school success on a single vertical axis (% pass, mean score). The growth model doubles the information we have by adding a horizontal dimension.

GROWTH MODEL / SCHOOL CITY OF HOBART / GRADE /

SCHOOL CITY OF HOBART (4730): SCHOOL ACHIEVEMENT & GROWTH



Mouse over a point to view school data summary
Click a point to view drill down options
Check boxes in grid below to highlight the points on the chart

[Clear All Selections](#)

| Name | # Tested | Pass % | Median Growth % |
|------------------------------------|----------|--------|-----------------|
| <input type="checkbox"/> 3rd Grade | 279 | 79.6 | 0.0 |
| <input type="checkbox"/> 4th Grade | 284 | 78.5 | 48.0 |
| <input type="checkbox"/> 5th Grade | 300 | 84.7 | 41.0 |
| <input type="checkbox"/> 6th Grade | 337 | 82.8 | 44.0 |
| <input type="checkbox"/> 7th Grade | 285 | 69.8 | 40.0 |
| <input type="checkbox"/> 8th Grade | 293 | 71.7 | 35.0 |

School City of Hobart shows Lower Growth and Higher Achievement in the Spring 2010 ISTEP+ for Math in grades 4, 5, and 6. Grades 7 and 8 show Lower Growth and Lower Achievement.

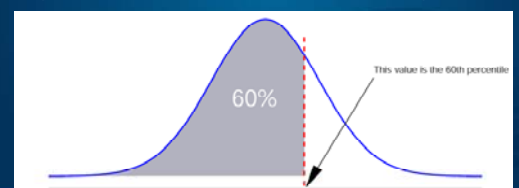
A: The Indiana Growth Model takes a student’s ISTEP+ score in “year 1” and finds all other students in the state who got exactly that same score, say in math. Then the state looks at all of the “year 2” math scores for the same group of students and sees how the student in which we are interested scored compared to the other students in the group. Growth is reported in percentiles. Note: 3rd grade does not have 2 years of test scores to report growth.

Q: When Indiana is comparing students, to whom does the model compare “my” student?

A: The comparison group or “academic peer group” consists of ALL students with that same “Year 1” scale score in that grade level and for that subject—they look only at test performance (academic mastery) and not at any other variable.

Student Growth Percentile

- The “student growth percentile” compares a student’s growth to the rest of their academic peer group.
- If the student growth percentile is 60, that student performed better than 60% of his academic peers.





Indiana's Parent Pledge

As a parent, grandparent or caring adult I hereby affirm my commitment to the academic achievement and career success of my child. I promise to make the pursuit of knowledge a priority in my household. To demonstrate my commitment to this goal, I pledge to adhere to the following principles:

My child will read with an adult or be encouraged to read independently each day.

My child will complete all homework assignments given by school instructors and will be encouraged to ask for help when it is needed.

My child will arrive at school on time, well rested and prepared for a full day of instruction and learning.

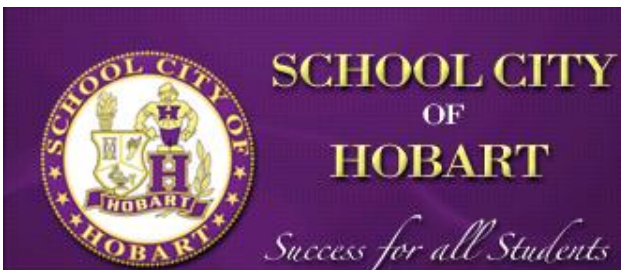
My child will treat teachers and fellow classmates with respect and compassion. I will make positive behavior the expectation in my household.

My child will graduate from high school and will understand the importance of a strong education in determining future success.

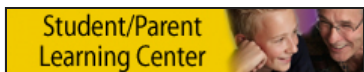
I will encourage my child to dream big and always give 100 percent effort.

I will treat my child's teachers as a valuable resource and work with them to support academic improvement and classroom behavior expectations.

I will monitor my child's academic growth and stay as involved as possible in my child's education. I will let the teacher know right away if I notice any problems.



School City of Hobart is your partner in this pledge! You can get started today! We have "Cool Tools" on our web site to assist you! Visit us online! <http://www.hobart.k12.in.us>



Together, my child and I, in partnership with Indiana's educators,
will make education our **#1** priority.

Parent Signature: _____

Date: _____



Please sign this pledge as a commitment to your child and their future.
Every returned form will be hanging in our schools to signify our joint partnership
for the success of children in Hobart.






LIFELONG GUIDELINES

1. Be Trustworthy
2. Be Honest
3. Encourage Others – No Put Downs
4. Use Active Listening Skills
5. Do Your Personal Best

cit-i-zen-ship

[sit-uh-zuh n-ship, -suh n-]  [Show IPA](#)

-noun

1. the state of being vested with the rights, privileges, and duties of a citizen.
2. the character of an individual viewed as a member of society; behavior in terms of the duties, obligations, and functions of a citizen: *an award for good citizenship.*

It's All About Citizenship!

caring
cooperation-
organization

sense of humor
friendship
problem-solving

patience
common sense
flexibility

effort
responsibility
integrity

courage
perseverance
pride

curiosity
resourcefulness
initiative

Our youth needs to feel a sense of belonging and connectedness to the community. Our goal should be to help shape their attitudes and behaviors by being good role models and mentors as we help them become valued contributing members to society. What are some action steps we can take as a community to help shape the best Brickie citizens?

Action Steps

1. Decide to use Lifelong Guidelines and Lifeskills as standards for your family.
2. Communicate and model Lifelong Guidelines and Lifeskills to our youth.
3. Teach and show them examples of ways to follow Lifelong Guidelines and Lifeskills.
4. Celebrate when children follow the Lifelong Guidelines and Lifeskills and correct them when they make unhealthy choices.

Service to Others! What better way to show students how to make a difference in society than through Service Learning? If we provide students with the opportunity to show kindness and caring attitudes, they will see and experience first hand the impact they have on others. We want caring and compassionate citizens. Last year, Hobart High School had over 22,000 hours of Service Learning. Every school participates in service learning. Make it part of your family's regular routine to do for others!



Mrs. Whiting's Family & Consumer Science (FACS) class at HMS performed service learning by sewing construction vests for the kindergartners.

Leadership and Bully-free! Team LEAD in our schools helps to create a social climate where **kids** take ownership of the change we desire to see as good citizens in society. What is **Team LEAD**? **Team LEAD** is a bystander leadership group of students. **Team LEAD** promotes Leadership, Empathy, Accountability, and Open Discussion. **Mentoring**, both formal and informal, is a vital component of bystander leadership. Bystander Leadership/Support Groups have proven to be a key component in creating program ownership and student accountability in our schools. Get your child involved with **Team LEAD**.





The Friendly City of Hobart! Take Up a Community Cause! Brickie Pride and Drug Free!



RISK FACTORS

Dr. J. David Hawkins' &
Dr. Richard F. Catalano's

Decades of research identified 20 risk factors (predictors) for five problem behavior areas:

dropping out of school,
teen pregnancy or STDs,
violence,
delinquency, and
substance abuse.

1. AVAILABILITY OF DRUGS
2. AVAILABILITY OF FIREARMS
3. MEDIA PORTRAYALS OF VIOLENCE
4. TRANSITIONS AND MOBILITY
5. LOW NEIGHBORHOOD ATTACHMENT AND COMMUNITY DISORGANIZATION
6. COMMUNITY LAWS AND NORMS FAVORABLE TOWARD DRUG USE, FIREARMS, AND CRIME
7. EXTREME ECONOMIC DEPRIVATION
8. ACADEMIC FAILURE BEGINNING IN LATE ELEMENTARY SCHOOL
9. LACK OF COMMITMENT TO SCHOOL
10. FAMILY HISTORY OF PROBLEM BEHAVIOR
11. FAMILY MANAGEMENT PROBLEMS
12. FAMILY CONFLICT
13. FAVORABLE PARENTAL ATTITUDES AND INVOLVEMENT IN THE PROBLEM BEHAVIOR
14. EARLY AND PERSISTENT ANTISOCIAL BEHAVIOR
15. REBELLIOUSNESS
16. FRIENDS WHO ENGAGE IN THE PROBLEM BEHAVIOR
17. GANG INVOLVEMENT
18. FAVORABLE ATTITUDES TOWARD THE PROBLEM BEHAVIOR
19. EARLY INITIATION OF PROBLEM BEHAVIOR
20. CONSTITUTIONAL FACTORS - substance abuse, delinquency, & violence.

What happens after Red Ribbon Week with our students pledging to be drug and alcohol free? What can we do as parents and a community to help our students lead a life that is true to their pledge:

“DRUG FREE! THAT’S FOR ME!”

Please Join Us...

**Community Cause:
Brickie Pride & Drug Free**



What: Illegal Drugs and the Consequences Thereof
Presented by Mark Becker

When: Monday, November 29, 2010 - 6:30 p.m.

Where: Hobart High School Board Room
Door #1

Why: What can drugs/alcohol do? What do parents need to look for as indicators of drug/alcohol usage and abuse? What does drug paraphernalia look like? How do you stop it before it starts?



We need everyone in our community to have awareness about substance abuse. The community of Hobart needs to protect their youth! Make a commitment to join our

“Community Cause: Brickie Pride and Drug Free.”

*Every person that comes will receive a free pass to an athletic event of their choice.

*Every parent that comes can enter to win the new iPod Shuffle for their child. The School City of Hobart Educational Foundation and the Hobart High School Choirs have generously donated 15 iPod Shuffles for the drawing at the end of the evening.



Take a stand! Join us for a

“Community Cause: Brickie Pride and Drug Free.”

Get With It! Get Smart!

Socializing Online and Smart Phones!

Get Connected!



Social networking sites, chat rooms, virtual worlds, and smart phones are how teens and tweens socialize. Kids share pictures, videos, thoughts, and plans with friends, others who share their interests, and sometimes, the world at large.

Socializing online can help kids connect with friends, and even their family members, but it's important to help your child learn how to navigate these spaces safely. Among the pitfalls that come with online socializing are sharing too much information, or posting pictures, video, or words that can damage a reputation or hurt someone's feelings. Applying real-world judgment and sense can help minimize those downsides.

What can you do? STAY CONNECTED!

You need to become more tech savvy. Join Joe Clemmons, our School Resource Officer (SRO), Christopher King, the School City of Hobart's Director of Technology, & Kelli Koritko, Home School Coordinator, to discover how to navigate and provide your child with proper supervision and care by learning how to participate in their technology driven world.

- Who:** Parents, Guardians, and Community Members
- What:** I Am Tech Savvy (includes Facebook Training)
- When:** For your convenience we are offering this workshop twice.
December 6, 2010 & January 10, 2011
- Where:** Hobart High School Board Room
- Time:** 6:00 p.m.- 8:00 p.m.
- Followup:** Facebook with Officer Clemmons
www.facebook.com/schoolcityofhobart
and jclemmons@hobart.k12.in.us

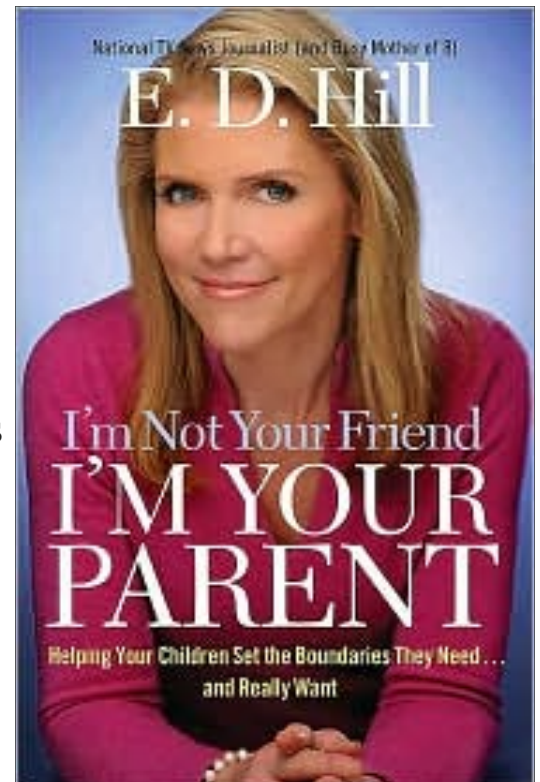




I'm Not Your Friend, I'm Your Parent: Helping Your Children Set the Boundaries They Need... and Really Want

We give you **PERMISSION TO PARENT!** Parents reclaim your role to make the hard decisions and put your children's characters and well-being ahead of peer pressure and social status. Join us for a book study along with Facebook discussions on how to tackle today's parental challenges including:

- Manners: thank you and other common courtesies
- Discipline: tantrums and time-outs
- Money: chores and allowances
- Sportsmanship: fair vs. foul
- Clothing: fashion and dress codes
- Teenagers: structure and consequences



Includes a special chapter on Driving, Dating, and other Death-Defying Feats along with contracts for use with teens.

Who: Parents who want to PARENT
When: Monday, November 15, 2010 and Facebook after the first meeting
Where: The Board Room at Hobart High School and Facebook
Time: 6:00—8:00 and Facebook following the first meeting
How: RSVP by calling 942-8885, email rnicoloff@hobart.k12.in.us, or Join us on Facebook: www.facebook.com/schoolcityofhobart



Talk to Your Kids! What's Their Plan?

EXPLORE CAREERS

REAL-WORLD REALITY CHECK



Your teachers want you to be in class on time every day, have a good attitude and get your work done.

Think you'll be done with that stuff after graduation? Think again. The following list is what employers expect.

■ Attendance

Come every day.

■ Punctuality

Be on time.

■ Good Attitude

Work cooperatively with others.

■ Basic Skills

Be able to read, write, talk, listen and compute well.

■ Problem Solve

Choose good solutions to resolve issues.

■ Responsibility

Set goals and be organized.

■ Honesty

Be trustworthy.

■ Leadership

Motivate others toward goals.

■ Teamwork

Contribute to a group effort.

LOOKING FOR CAREER DIRECTION?

Check out Indiana's career pathways at www.doe.in.gov/careerpathways for a closer look at 16 different career clusters and hundreds of job ideas.

Sit down with your child and discuss:

CAREER CONFIDENCE

Do You Have It?

Career direction is important. Are you confident—or clueless? Take our quiz to find out.

1. How confident are you in your career choice? (Pick one)

- a. I know EXACTLY what career I'm reaching for
- b. I have some ideas of what I want to do in the future
- c. I really don't know what careers interest me

2. Have you completed a career interest inventory? (Pick one)

- a. Yes
- b. I plan to do so
- c. No

3. What diploma are you earning? (Pick one)

- a. Core 40 with Academic Honors or Core 40 with Technical Honors or International Baccalaureate
- b. Core 40
- c. Don't know

4. Do you know what the fastest-growing and highest-paying careers are in Indiana? (Pick one)

- a. Yes
- b. No

5. Have you talked to your school counselor about your plan for life after high school? (Pick one)

- a. Yes
- b. I plan to do so
- c. No

6. Do you have a plan for what you're going to do right out of high school? (Pick one)

- a. Yes
- b. I am working on it
- c. No, not even close

7. Do you have a part-time job or have you completed an internship, job shadowing or co-op experience?

(Pick all that apply)

- a. Part-time job
- b. Internship
- c. Job shadow
- d. Co-op experience

8. Have you done any of the following? (Pick all that apply)

- a. Met with a college representative
- b. Attended a local college fair
- c. Visited a local college
- d. Taken the ASVAB assessment
- e. Completed a WorkKeys assessment
- f. Earned a workforce certificate

Answers

For questions 1-6, give yourself two points for each a; 1 point for each b; 0 for each c. For questions 7 and 8, give yourself 1 point for each item selected. Now add up your points to see what your results reveal about your level of career confidence:

14-22 points: Great. You have a plan and you know what you want to do. Keep moving forward but be open and flexible in case your situation changes.

9-13 points: You've done some good things to prepare for your future—but there's more you can do. Talk to family and friends about what you plan to do in the future or explore career options online. Internships or job shadowing could help you be more definite.

0-8 points: It's OK to be unsure about what you want to do in the future. But continue exploring. Job shadow, talk to friends about what they do and research various careers online. Doing career exploration now will keep you motivated as you go forward.

READY FOR GRADUATION?

Are you succeeding in the courses you need to graduate AND prepared for whatever comes next?

Course Description for Biomedical Innovations

In this capstone course, students apply their knowledge and skills to answer questions or solve problems related to the biomedical sciences. Students design innovative solutions for the health challenges of the 21st century as they work through progressively challenging open-ended problems, addressing topics such as clinical medicine, physiology, biomedical engineering, and public health. They have the opportunity to work on an independent project and work with a mentor or advisor from a university, hospital, physician's office, or industry. Throughout the course, students are expected to present their work to an adult audience that will include representatives from the local business and healthcare community.

PLTW Biomedical Science is entering its fourth year at Hobart High School and with it comes the introduction of the senior year capstone course: Biomedical Innovations. The final course is a culmination of the past four years and has been designed to incorporate past lab skills and background knowledge in such areas as public health, human physiology, and genetic analysis.

Students will become involved in volunteering, internships and job shadowing through partnerships with Saint Mary's Medical Center, Indiana University School of Medicine Northwest, Hobart Animal Clinic, and Lake County Coroner's Office.

The biomedical program has had a great amount of success over these past four years. We have three PLTW teachers reaching out to 124 high school students, including 18 fourth-year students, eager to learn about the biomedical profession and begin their journey in college for their chosen career.

The hands-on approach, project-based curriculum and learning intensity are just a few of the attributes that make this national program a huge success.

Hobart Seniors Sound off on the Biomedical Sciences Program.

"The PLTW program, gives me a head start into the medical profession. Not only that, the curriculum is remarkable and highly interesting."—Liz Pierce, Senior



"I like how interactive and advanced the program is." — Reena Childers, Senior



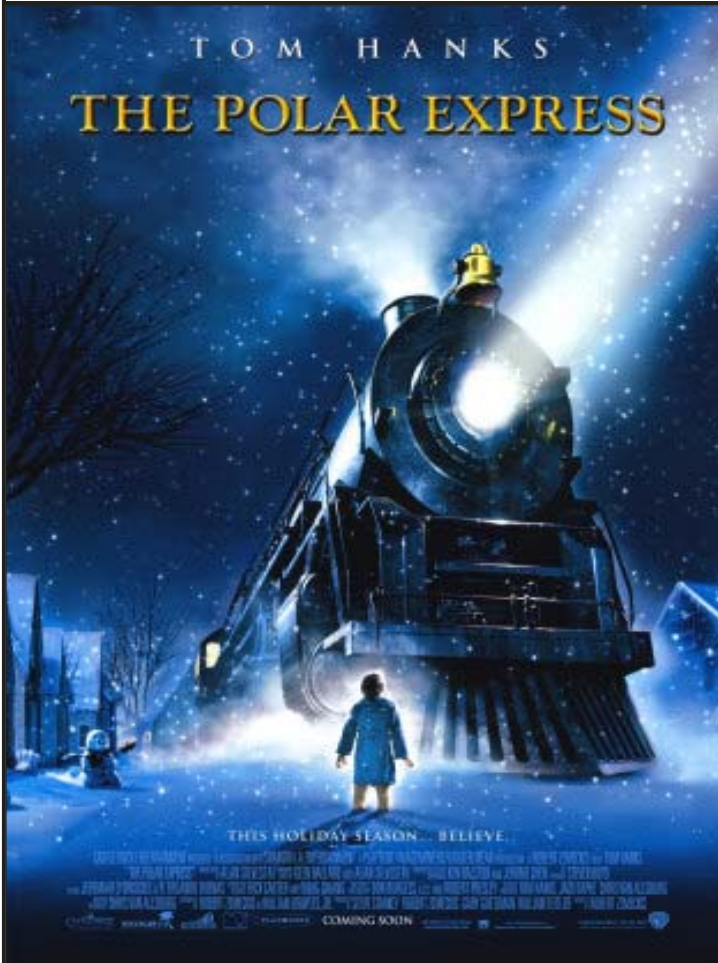
"My favorite part of this class is focusing on cancer and the different diagnostic techniques. Since I am very interested in the field of radiology, I enjoyed learning about the different scans used." —Reagan Snedecor, Senior



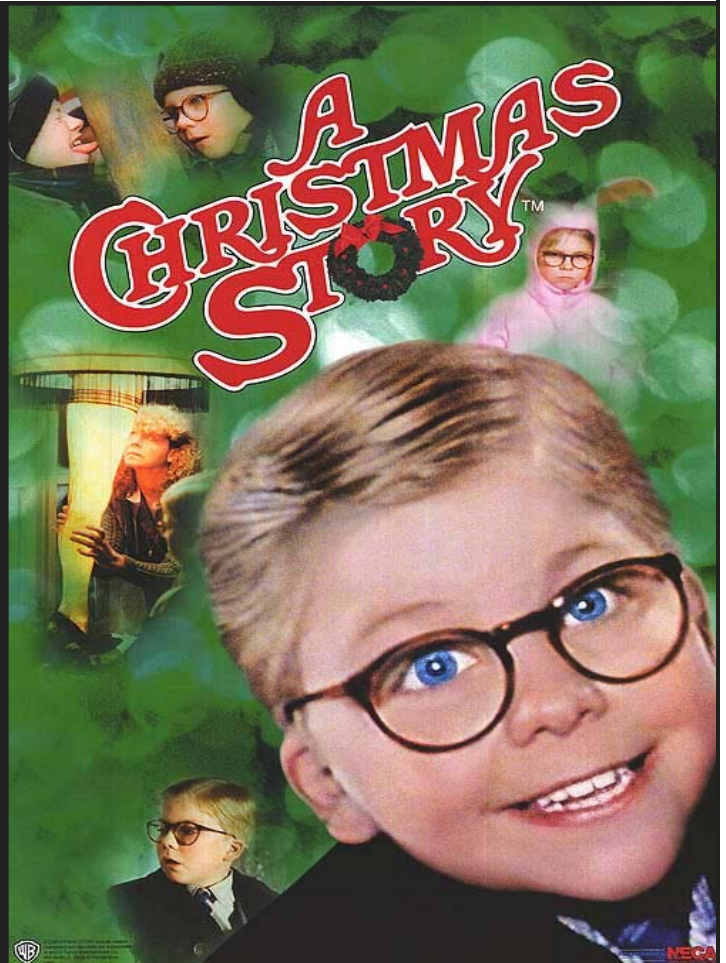
"I loved all the dissections. I can't wait to dissect the fetal pig!" —Sara Jackson, Senior



Family Fun Around the Holiday!



This magical holiday tale tells of a young boy who still wants to believe in Santa even though his friends have “grown out of it.” His faith is rewarded when a steam train pulls up to his house and escorts him to the North Pole to meet Santa. The cutting-edge “motion capture process” used to film this story allows the real life actors to drive the emotions and movements of the animated characters.



Humorist Jean Sheperd's American Christmas is brought vividly to life in A CHRISTMAS STORY, a nostalgic and witty remembrance of a time gone by. Filled with humor, warmth, and dozens of captivating moments. The movie's undeniable charm makes it an all-time favorite for young and old alike.

Attend a Holiday Sing Along and Family Movie Night

What: Holiday Sing Along & The Polar Express

Who: Families (an adult must attend)

When: Saturday, December 4

Where: Hobart High School Theatre/Door 21

Time: 6:00 p.m.

The tickets are FREE. You must call 942-8885 extension 0 to reserve your tickets as seating is limited to 650.

What: Holiday Sing Along & The Christmas Story

Who: Families (an adult must attend)

When: Friday, December 10

Where: Hobart High School Theatre/Door 21

Time: 6:00 p.m.

The tickets are FREE. You must call 942-8885 extension 0 to reserve your tickets as seating is limited to 650.



Movie Licensing USA®

A Division of Swank Motion Pictures, Inc. • Tim Swank, Chairman





Senior Citizens Beat!



The School City of Hobart invites senior citizens from the community of Hobart to join us for some entertainment, health, and educational events! Entertainment events for Hobart's Senior Citizens are made possible by the generous support of the Maria M. Reiner Senior Citizens Trust, a fund of the Legacy Foundation, Lake County's Community Foundation. In addition, all programs are sponsored by the School City of Hobart in conjunction with the HHS Performing Arts Department, the HHS Emergency Rescue Technology Academy, the Technology Department, the Hobart Kiwanis, and the HHS Key Club.

Please join us for these FREE entertainment, health screening, and educational opportunities.



HEALTH

Blood Pressure Screening at HHS will be held every Wednesday from 8-9 a.m. when school is in session. Enter through door #1 & proceed to the Great Hall.

Residents of Hobart are invited to take advantage of the track at the Hobart High School Frank Kurth Fieldhouse. Simply show your driver's license or state ID as proof of residency. Monday-Thursday 5:50 a.m.-7:20 a.m. & 5:50 p.m.-7:20 p.m. when school is in session. Athletic competitions and inclement weather may force the closing of evening hours. Please watch for signage.

Walk-ins welcome! No registration required.



ENTERTAINMENT at Hobart High School

Theatre Comedy: "You Can't Take it With You"

November 17

5 pm Refreshments | 6 pm show

Holiday Choral Concert

November 30

5 pm Formal Dinner | 6 pm show

Holiday Season Band Concert

December 11

5 pm Refreshments | 6 pm show

Registration required

Please call the Senior Citizen Hotline at 219-947-7777 to register.



Athletics

Senior Citizens may stop by the HHS Athletic Office for FREE season passes to any high school sport.

EDUCATION

The Brickie Cove Book Club which consists of Community Senior Citizens and HHS Students will meet every month from September through April, on the third Wednesday of the month from 2:30 P.M. – 3:30 P.M.

Register by calling Alice Cope @ 942-8521 extension 8028.



SCHOOL CITY OF HOBART
32 East Seventh Street
Hobart, Indiana 46342
(219) 942-8885
NEWSLETTER

NON-PROFIT ORGANIZATION
U.S. Postage
PAID
Hobart, IN
Permit No. 113

Dr. Peggy Buffington, Ph.D.
 Superintendent
Mr. Ted Zembala
 Business Manager
Mrs. Deborah Matthys
 Director of Curriculum & Instruction
Mrs. Shannon O'Brien
 Director of Curriculum & Instruction
Mr. Felix Perry
 Director of Support Services
Mr. David Spitzer
 Principal, Hobart High School
Mrs. Carol Warren
 Assistant Principal, Hobart High School
Mr. Brent Martinson
 Assistant Principal, Hobart High School
Mrs. Denise Galovic
 Principal, Hobart Middle School
Mrs. Sharon Blaszkiewicz
 Assistant Principal, Hobart Middle School
Mrs. Sara Gutierrez
 Principal, Early Learning Center @ G.E.
Mrs. Debra Misecko
 Principal, Liberty Elementary
Mrs. Kacey Allen
 Principal, Joan Martin Elementary
Mrs. Amy Turley
 Assistant Principal, Joan Martin Elementary
Mrs. Mary Beth Ginalski
 Principal, Ridge View Elementary
Mr. Russell Mellon
 Director of Information Technology Services
Mr. Christopher King
 Director of Technology
Mrs. Vicky Johnson
 Transportation Coordinator
Mrs. Nancy Smith
 Food Service Director
Mr. Larry Juzwicki
 Director of School Safety
BOARD OF SCHOOL TRUSTEES
Mr. Terry D. Butler
 President
Mrs. Karen J. Robbins
 Vice President
Mr. Michael J. Rogers
 Secretary
Mr. Dave Bigler
 Member
Mr. Chad J. Kollross
 Member
Mr. Donald H. Rogers
 Member
Mr. Stuart B. Schultz
 Member

POSTAL PATRON

HOBART, INDIANA 46342

“Success for All Students”

Published by:

*Dr. Peggy Buffington
 &
 Rachel Nicoloff*

MARK YOUR CALENDAR FOR THESE UPCOMING EVENTS!



| | | | | |
|--|--|--|--|--|
| October 23rd Murder Mystery HHS Theatre 6-9 pm | November 6th High School Band Concert HHS Theatre November 9th MS-Band Concert MS Auditorium 7:00 pm | November 10th Grandparent's Day 4th Gr-Liberty November 11th Grandparent's Day 5th Gr-Liberty | November 15th I'm Not Your Friend, I'm Your Parent-See page 7 Ridge View Grandparent's Day 3rd Grade | November 17th Senior Citizen Theatrical Perf. Hors d'oeuvre Night See page 11 for more information. |
| November 18, 19, 20, 21 Fall Play HHS Theatre | November 29th Brickie Pride & Drug Free HHS Board Room Door #1 at 6:30 pm See page 5 for more information | November 30th Hobart's Senior Citizens Holiday Choral Concert & Dinner Night See page 11. | December 1st High School Holiday Choral Concert HS Theatre 7:00 pm | December 4th Holiday Sing Along The Polar Express See page 10 for more information |
| Dec. 6th & Jan. 10th I Am Tech Savvy including Facebook Training- See page 6 for more info. | December 9th 7th & 8th Grade Band Winter Pops Concert-MS Auditorium 7 pm | December 11th High School Holiday Season Band Concert December 14th JM-2nd Grade-6:30 “The Nutcracker” | January 25th HS Band Solo & Ensemble Recital HS Theatre Joan Martin 1st Grade Concert | January 25th Ridge View- Grandparent's/ Special Person's Day-4th Grade |
| February 10th HS Choral Concert HS Theatre 7:00 pm | February 17th HS Band Concert HS Theatre Ridge View Fun Fair | February 23rd Ridge View- Grandparent's/ Special Person's Day-1st Grade | February 23rd MS Beginning Band Concert 7 pm—MS Auditorium | February 25th JM-4th Grade Drama Club “Emperor's New Clothes” 7 pm |

The School City of Hobart does not discriminate on the basis of race, color, religion, gender, national origin, age, or individuals with disabilities, including limited English proficiency.

Annual notices can be found on our website under the Information tab.

School City of Hobart web site: www.hobart.k12.in.us